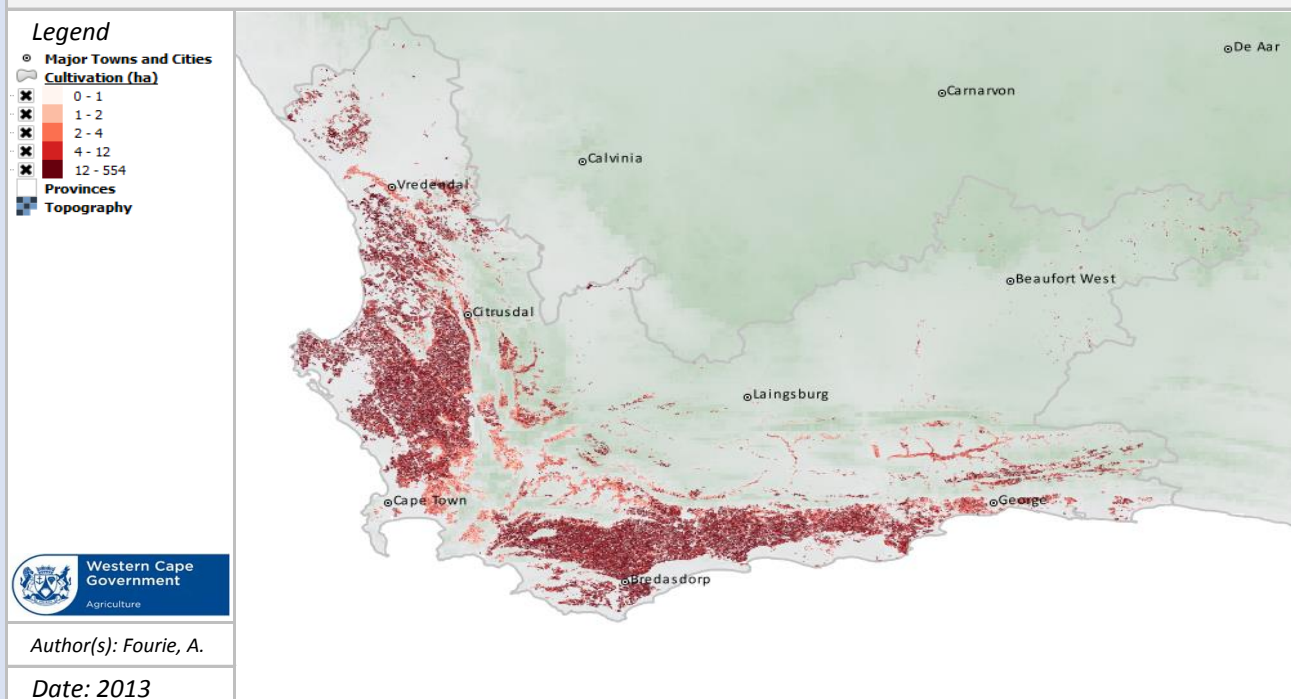


Winter Rainfall Crops**Meta-Data**

Title	Winter Rainfall Crops
File Name	WC_Flyover_Winter2013.shp
Author(s)	Fourie, A.
Publication Date	2013
Citation	Fourie, A. et.al. (2013). Western Cape Field Boundaries and Crop Types, Department of Agriculture, Western Cape.
License	<i>Detailed data set not available for dissemination.</i>
Abstract	<p>The dataset includes all field boundaries in the Western Cape province, with the associated winter crops. The digitising of the fields were done from Spot 5 satellite imagery of 2011 and 2012, as well as aerial photography of 2010. The low-level aerial survey of 2013 was conducted to observe crops per field per farm in order to populate the attributers for fields digitised as above. Some ground survey was carried out where aerial observation could not identify crops. This dataset was developed for the Western Cape Department of Agriculture as part of the Mapping of Agricultural Commodities in the Western Cape project.</p> <p>SAEON derived two data sets for use in the BioEnergy Atlas: (1) an estimate of underutilised land per mesozone, and (2) an estimate of the distribution of wheat residue per mesozone. These are biomass, potential, degraded land, erosion, barren rock</p>
Keywords	biomass, potential, degraded land, erosion, barren rock
Caveats	
Web Meta-Data	
Web Resource	<i>Not disseminated</i>

Methodology/ Protocol

Processing/ Provenance	http://researchspace.csir.co.za/dspace/handle/10204/1087
------------------------	---

Important Attributes

ATTRIBUTE	DESCRIPTION
-----------	-------------

FIELD_ID	Feature ID
FARM_ID	Farm Identification
MUNIC	Municipality (Local Municipality)
DISTRICT	District Municipality
CATNAME	Indicates special types of fields (horticulture, pivots, etc) - an empty value indicates a regular field
AREAHA	Hectares
CAPDATE	Date Captured
CROPS	Crop
CR_DETAIL	Crop - Details
CR_SUM	Hectares for specific crop
DRY_IRR	Irrigation indicator
IRR_TYPE	Irrigation type, if present
Avail	Availability for BioEnergy Cultivation or Residues

References and Sources

[1]	<i>Fourie, A. et.al. (2013). Western Cape Field Boundaries and Crop Types, Department of Agriculture, Western Cape.</i>
-----	---