

## Proposed spekboom reforestation plot South of Gannaland on Zandvlakte

The plateau south of Gannaland is degraded and situated southwest of the Farmstead of Zandvlakte (figure 2). The area was not only selected for the easy access, but as well for the vulnerability to erosion and loss of water infiltration capacity of this area. The bordering part (figure 3) is a thicket wide plot and is restoring.



Figure 1: Proposed restoration plot on plateau south of Gannaland. The upper part appears degraded but is a restoring thicket wide plot

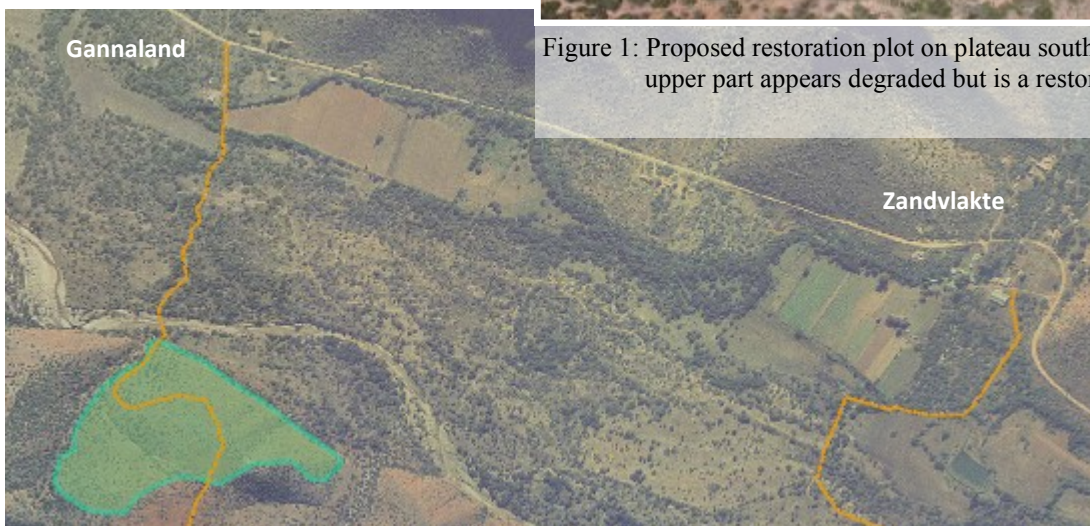


Figure 2: Proposed restoration plot with farmroads drawn on an aerial photograph

The proposed plot size is 14 hectares and will be a continuation of one of the Thicket Wide plots. Stock farming is not present in this area, so free roaming live stock shouldn't pose a threat to the planted trees. Planting spekboom in this area will reduce direct water runoff and erosion to the Baviaanskloof river. The area will be monitored to able to quantify the benefits of this restoration effort (carbon, water, erosion). This progress will be done in close collaboration with the landowner.



Figure 3: View on the current thicket wide plot which will be continued. Small spekboom cuttings are doing well in this area