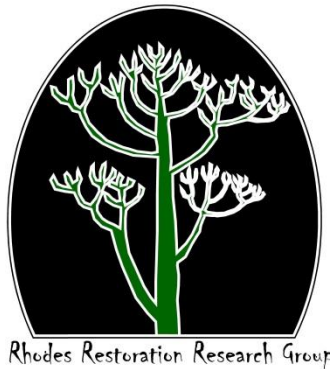


Pristine Albany Thicket for a one year  
crop of water melons – can Woolworths  
and Marks and Spencer please explain?



**Mike Powell**  
Restoration Research Group  
(RRRG)  
Rhodes University, South  
Africa.  
[mpowell@ru.ac.za](mailto:mpowell@ru.ac.za)

**Thicket Forum 2013**  
**September 4<sup>th</sup>**



**WESSA**

PEOPLE CARING FOR THE EARTH

**WILDERNESS**  
FOUNDATION

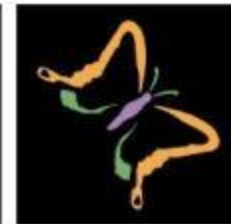


**CONSERVATION**  
SOUTH AFRICA

Member of the CI Network

**SANBI**

Biodiversity for Life



# **Thicket Forum 2012**

## **ARE MELONS A THREAT TO SUNDAYS RIVER THICKET?**

Div de Villiers

12-09-2012

# Thicket Forum 2012

Div de Villiers 12-09-2012

New NEMA Regulations 2010: listing notice 3 even stricter for clearing indigenous vegetation in critical biodiversity areas (includes thicket) – cannot clear > 1ha without authorisation

Clearance of an area of 1 hectare or more of vegetation where 75% or more vegetative cover constitutes indigenous vegetation, In Eastern Cape outside urban areas, **within 10 kilometres from any other protected area identified** in terms of NEMPAA or from the core area of a biosphere reserve.

# Thicket Forum 2012

Div de Villiers 12-09-2012

- **Habata Farms** (4000 t) melons/annum
- Distribute nationally and internationally  
Woolworths and Mark and Spencers
- Quality Control – fungi!!!
- Associated with replanting on same lands
- Habata instructed to plant on virgin land or land that has been fallow for 3 years

# Thicket Forum 2012

Div de Villiers 12-09-2012

## CONCLUSIONS

- Progress with implementation of legislation and awareness
- DEDEAT can only do so much
- It appears that melon farming can have a devastating impact on virgin Thicket
- Need a strategy to address

# Questions from 2012?

- Where is the monitoring?
- What are the ECPTA and SANParks Buffer policies?
- Where is the coordinated and cooperative governance? ECIC, DEA, DAFF, etc?
- Where are these guys?



CONSERVATION  
SOUTH AFRICA



Member of the CI Network

**WILDERNESS**  
FOUNDATION



# Questions for 2013+

<b>Taxonomic Group</b>	<b>Species</b>	<b>Endemic Species</b>	<b>Percent Endemism</b>
<b>Plants</b>	<b>8,100</b>	<b>1,900</b>	<b>23.5</b>
<b>Mammals</b>	<b>194</b>	<b>4</b>	<b>2.1</b>
<b>Birds</b>	<b>541</b>	<b>0</b>	<b>0.0</b>
<b>Reptiles</b>	<b>209</b>	<b>30</b>	<b>14.4</b>
<b>Amphibians</b>	<b>72</b>	<b>11</b>	<b>15.3</b>
<b>Freshwater Fishes</b>	<b>73</b>	<b>20</b>	<b>27.4</b>

**CI Biodiversity Hotspot**



# Questions for 2013+

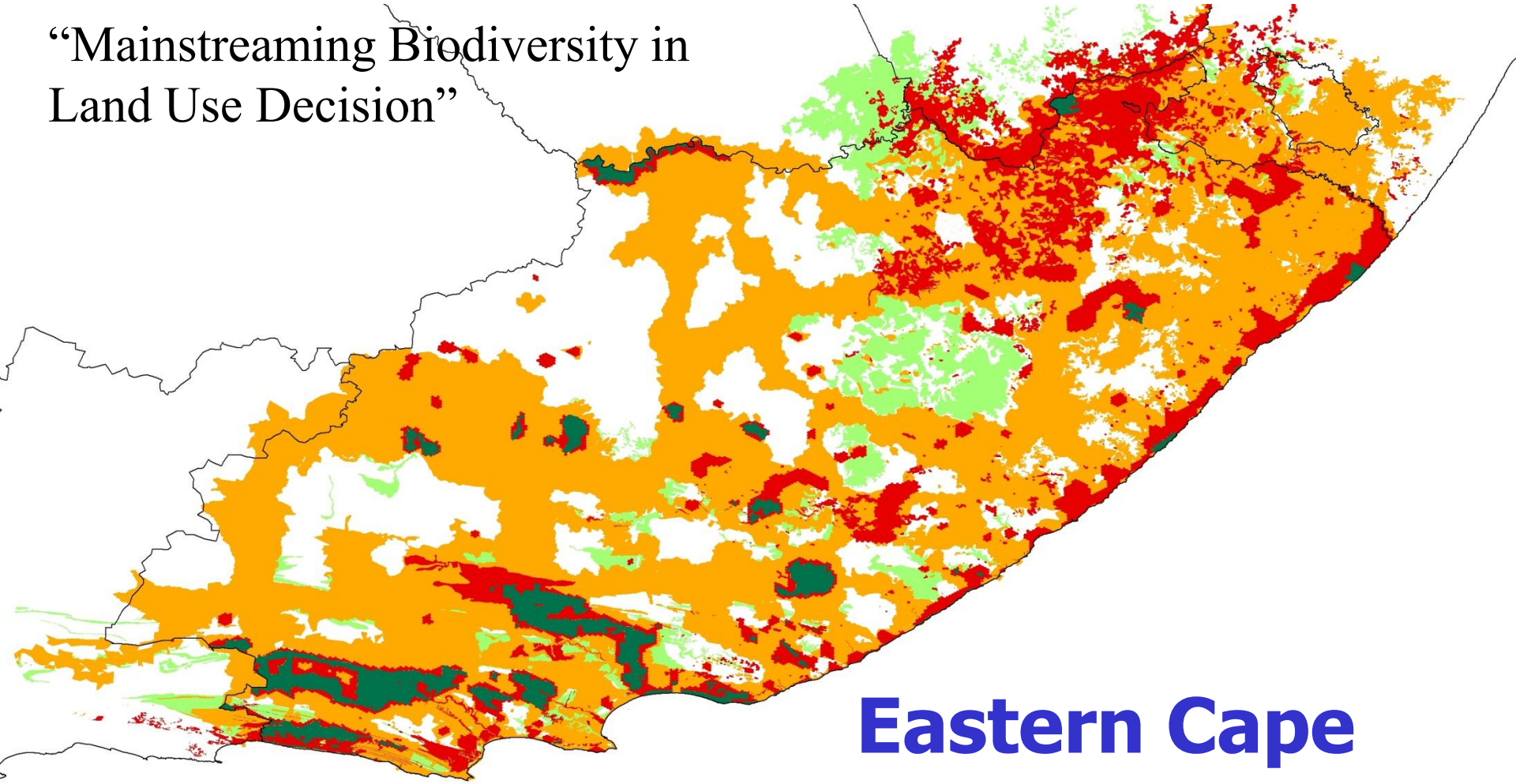
**IDPs, SDFs, EMFs, LEAPs, MBSPs**

**Are we just tickboxing?**

**Is there capacity and will power to  
monitor?**

# Questions for 2013+

“Mainstreaming Biodiversity in  
Land Use Decision”



**Eastern Cape  
Conservation Plan**

*Berliner & Desmet 2007.*

# Critical Biodiversity Areas

CBA map category	Code	BLMC	
Protected areas	PA1	BLMC 1	Natural landscapes
	PA2		
Terrestrial CBA 1 (not degraded)	T1		
<b>Terrestrial CBA 1 (degraded)</b>	<b>T1</b>	<b>BLMC 2</b>	<b>Near-natural landscapes</b>
	<b>T2</b>		
<b>Terrestrial CBA 2</b>	<b>C1</b>		
	<b>C2</b>		
Other Natural Areas	ONA T3	BLMC 3	Functional landscapes
	ONA		
Transformed areas	TF	BLMC 4	transformed landscapes

# Biodiversity Land Management Class

Landuse	Land use Management Class Type			
	Class 1	Class 2	Class 3	Class 4
Conservation	Yes	Yes	Yes	Yes
Game farming	No	Yes	Yes	Yes
Communal livestock	No	Yes	Yes	Yes
Commercial livestock ranching	No	No	Yes	Yes
<b>Dry land cropping</b>	<b>No</b>	<b>No</b>	<b>Con</b>	<b>Yes</b>
Irrigated cropping	No	No	Con	Yes
<b>Dairy farming</b>	<b>No</b>	<b>No</b>	<b>Con</b>	<b>Yes</b>
Timber	No	No	Con	Yes
Low density rural settlement	No	No	Con	Yes
Low density urban settlement	No	No	Con	Yes
High density urban	No	No	Con	Yes

# The case of Alexandria Forest



© 2013 AfrGIS (Pty) Ltd.  
Data SIO, NOAA, U.S. Navy, NGA, GEBCO  
© 2013 Google  
Image © 2013 DigitalGlobe

Google earth

Imagery Date: 4/25/2012 33°43'30.70" S 26°24'19.11" E elev 214 m eye alt 27.11 km

Data from: Lloyd *et al.* 2002 and Lombard *et al.* 2002.



# The case of Gamtoos Valley Thicket

Forests and Woodlands Symposium  
PE 2006

“The full restoration of degraded subtropical thicket is going to require considerable financial and institutional resources, as well as a significantly long time line (with no guarantee of full ecosystem recovery). **Society cannot allow the continued mining of natural capital through overstocking of livestock.** The relevant authorities urgently need to **start monitoring** and controlling the **unsustainable harvesting of agricultural resources** in order to make land users accountable for their actions.”

# Intergenerational Equity and Natural Capital

“Providence meant to spoil our farmers in placing the spekboom on the hills of the Karroo” Palmer & Pitman pg 111, (1961).



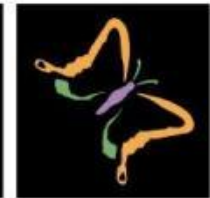


# Questions for 2014

Can these guys register for TF 2014 now please?

**SANBI**

Biodiversity for Life



**CONSERVATION  
SOUTH AFRICA**

Member of the CI Network



**WILDERNESS  
FOUNDATION**

