



*A brief overview of planning,  
monitoring and research on the  
Baviaanskloof WHS*

*ADVENTURE PROVINCE*  
*Eastern Cape*  
PARKS & TOURISM AGENCY



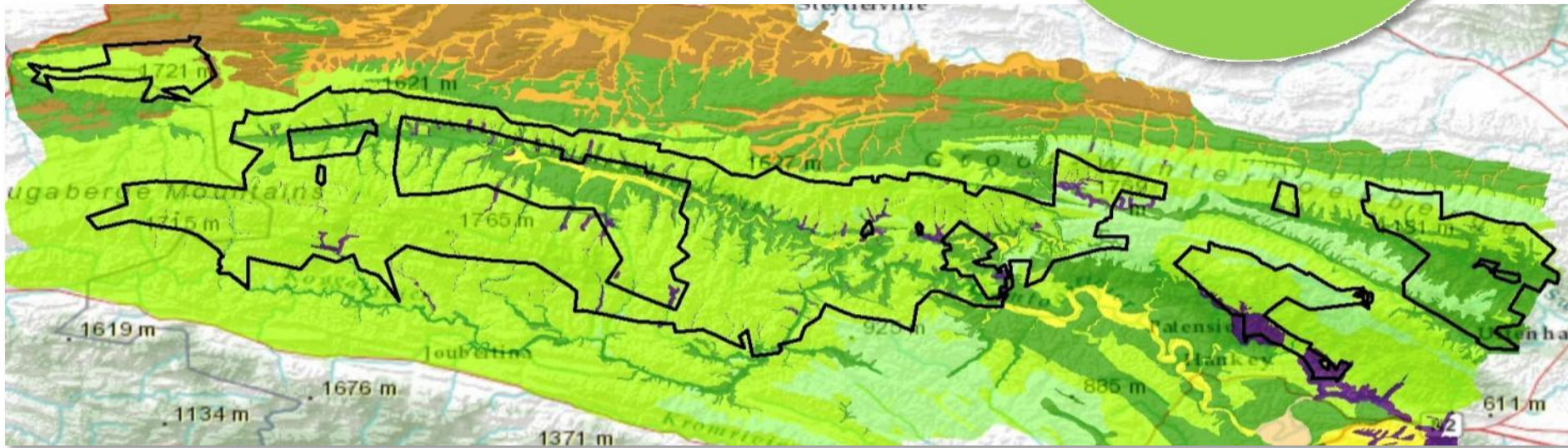
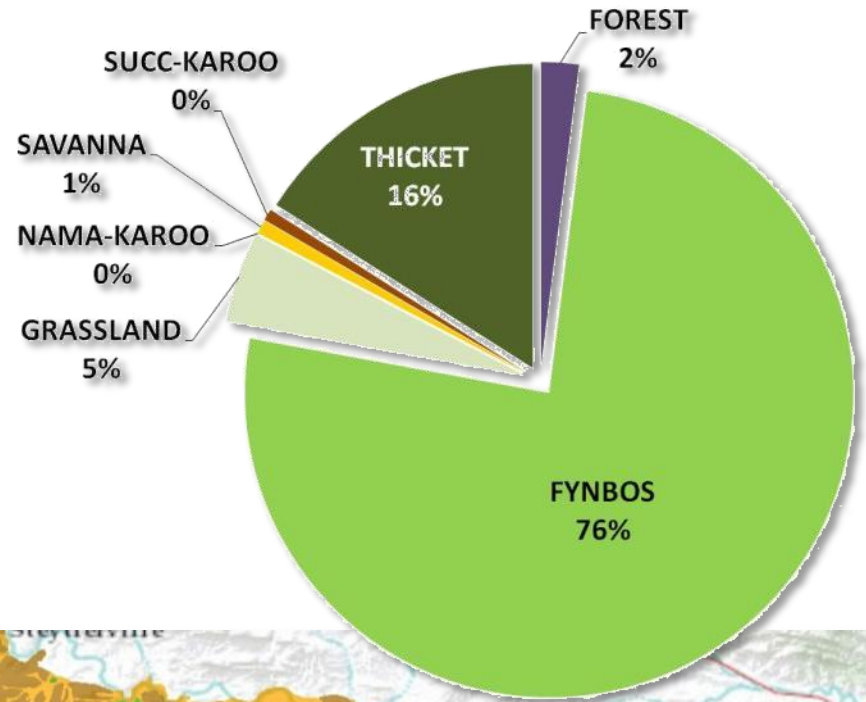


# The Baviaanskloof Cluster





# Diversity



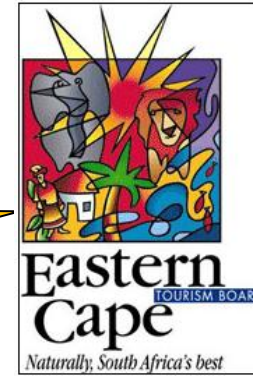
# ECPTA: mandate, capacity and functions



# Merger and mandate



Dec 2010



**ADVENTURE PROVINCE**  
*Eastern Cape*  
PARKS & TOURISM AGENCY

Manage biodiversity within protected areas

Manage tourism in the province





# "Scientific Services"

Operations

Recommendations

Biodiversity Conservation

Stewardship manager



Dr Dave Balfour  
Executive Director

Mammal

Senior Ecologists

Coordinator

Ecosystems

Senior Conservation Planner

Marine Ecologist

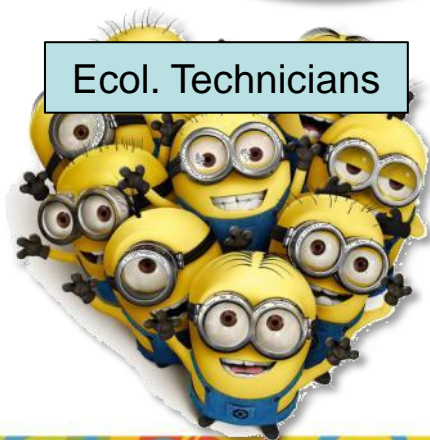
Regional Ecologist

Dbs manager

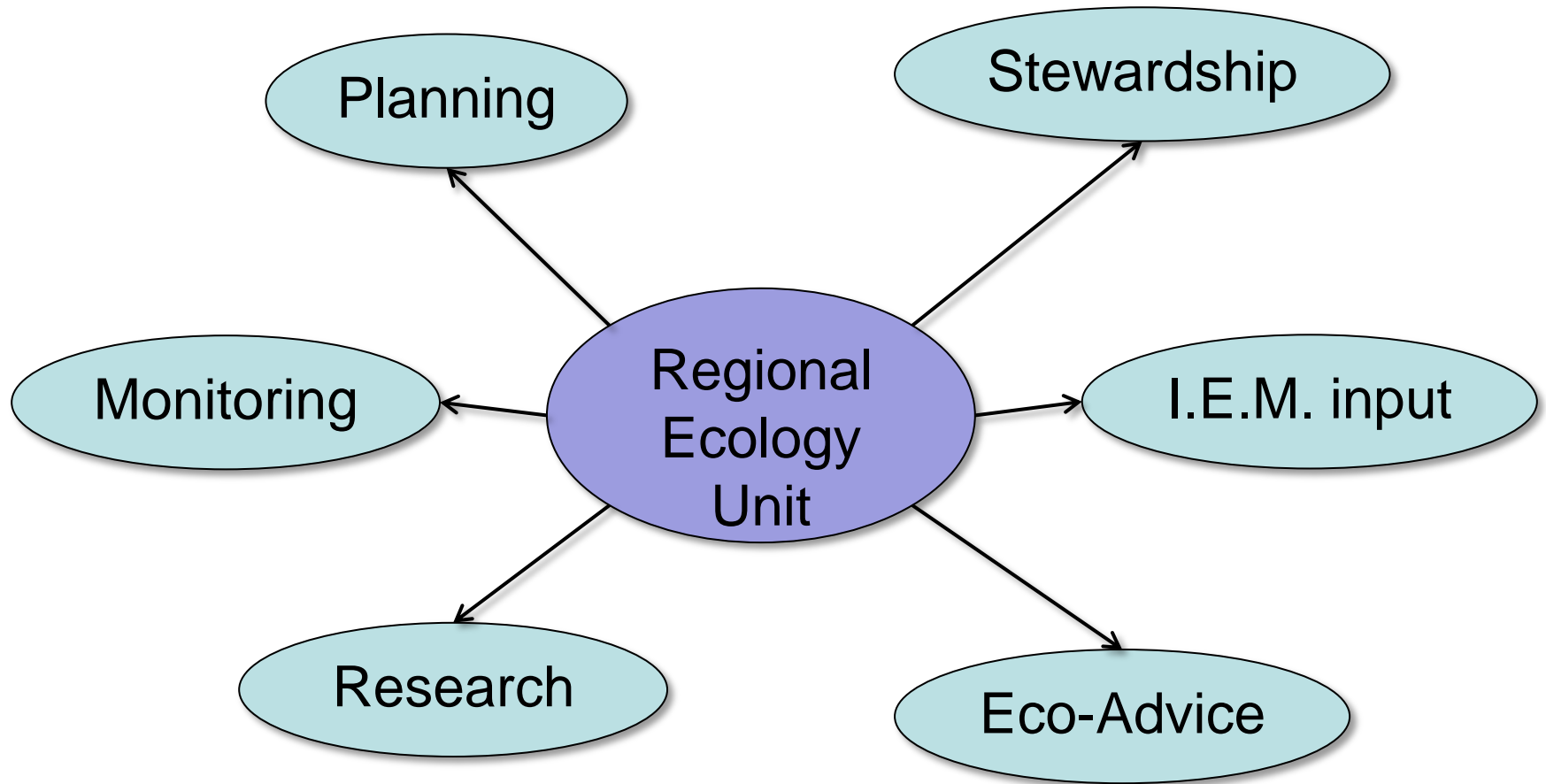
IEM assessor

Ecol. Technicians

Planning Tech.



# Responsibilities



# Protected Area Planning

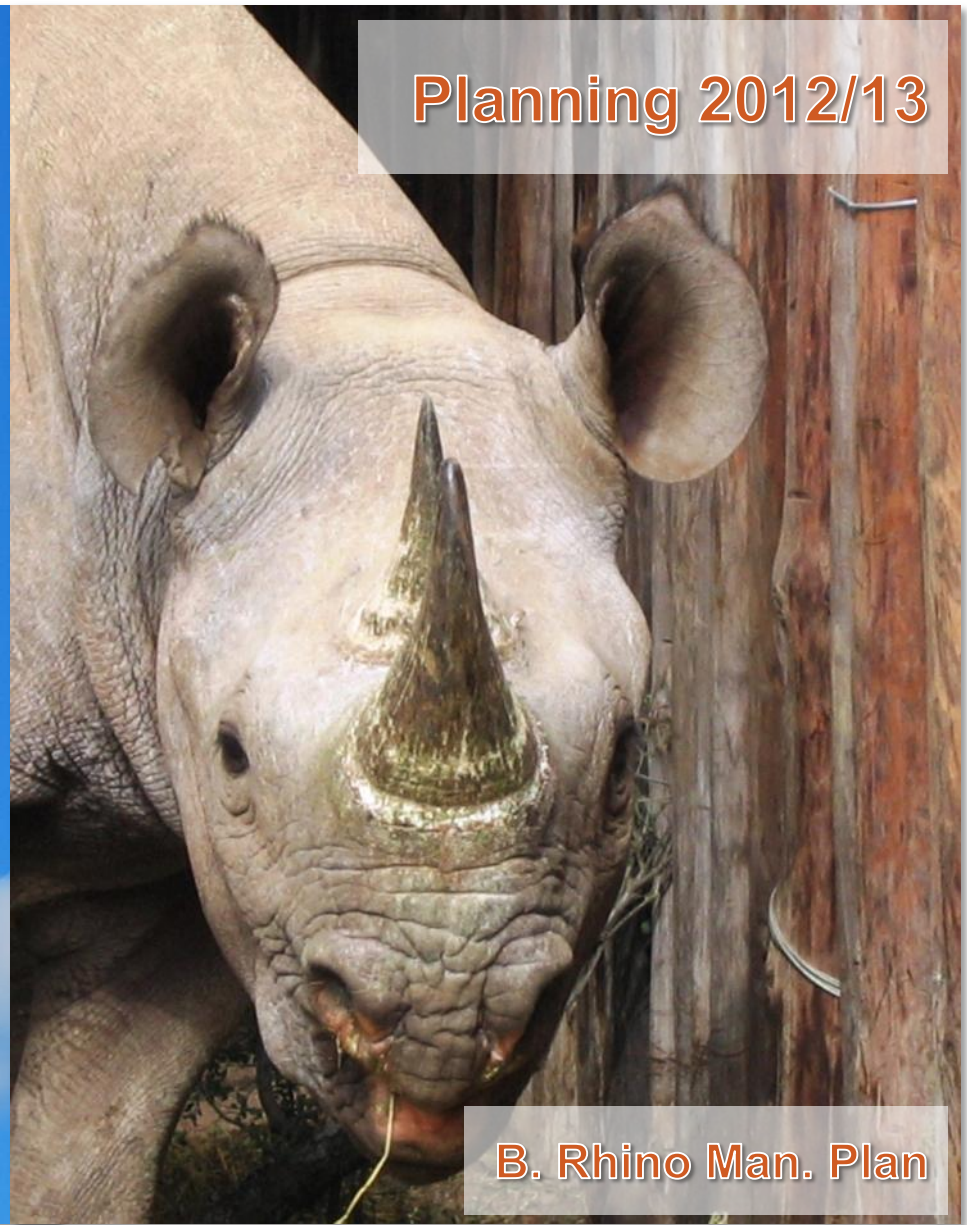




Planning 2012/13



Buffalo Man. Plan



B. Rhino Man. Plan





Planning 2013/14

Alien Plant Man. Plan

Fire Man. Plan



# Biodiversity Monitoring





# Large mammals: aerial game census





# Large mammals: camera trapping



*Attack*

7/1/2013 4:19 PM





# Threatened species: rhino monitoring





# Threatened species: CMZ monitoring



05.09.2011 15:30



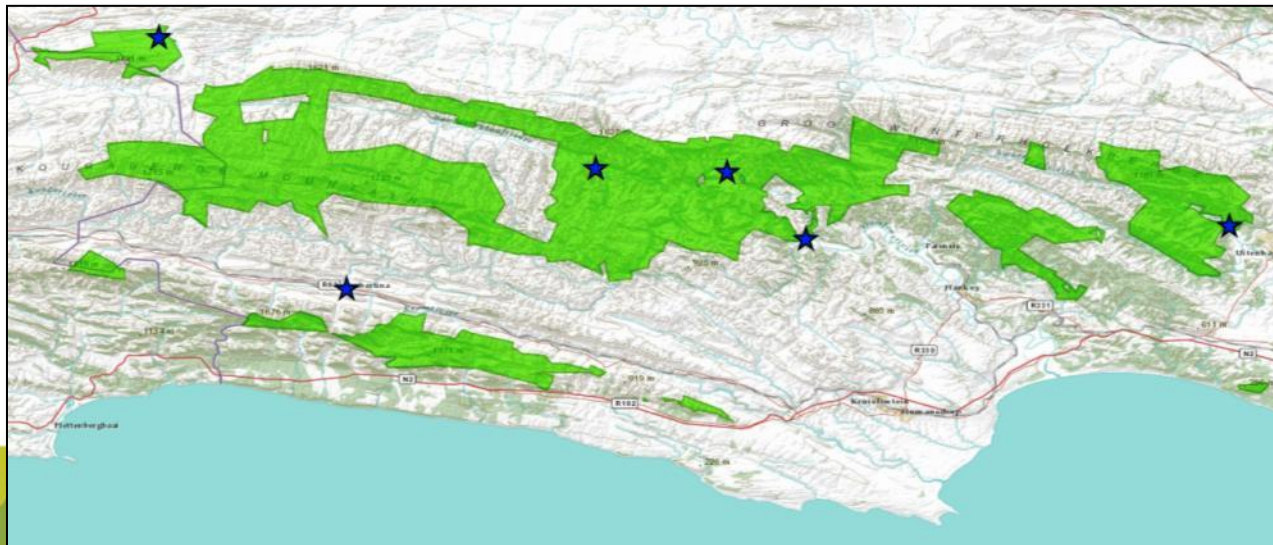


# Biodiversity inventories



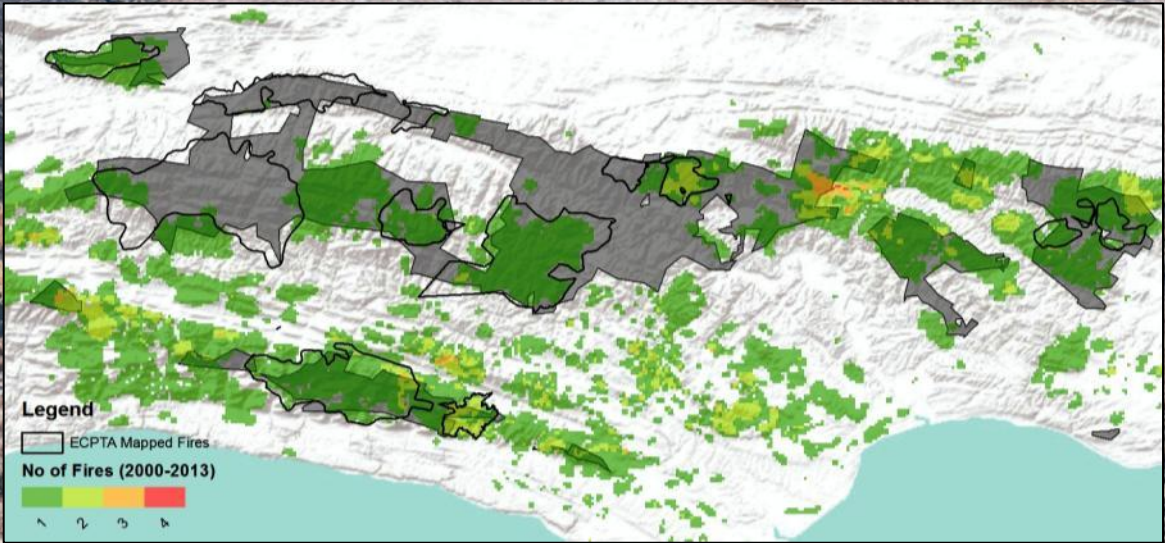
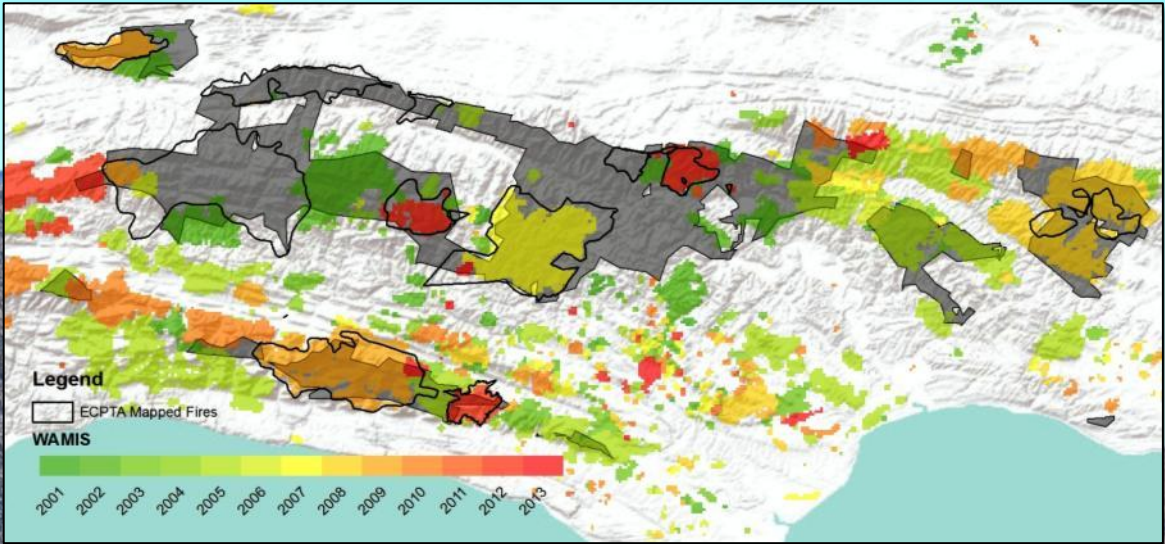


# Climate



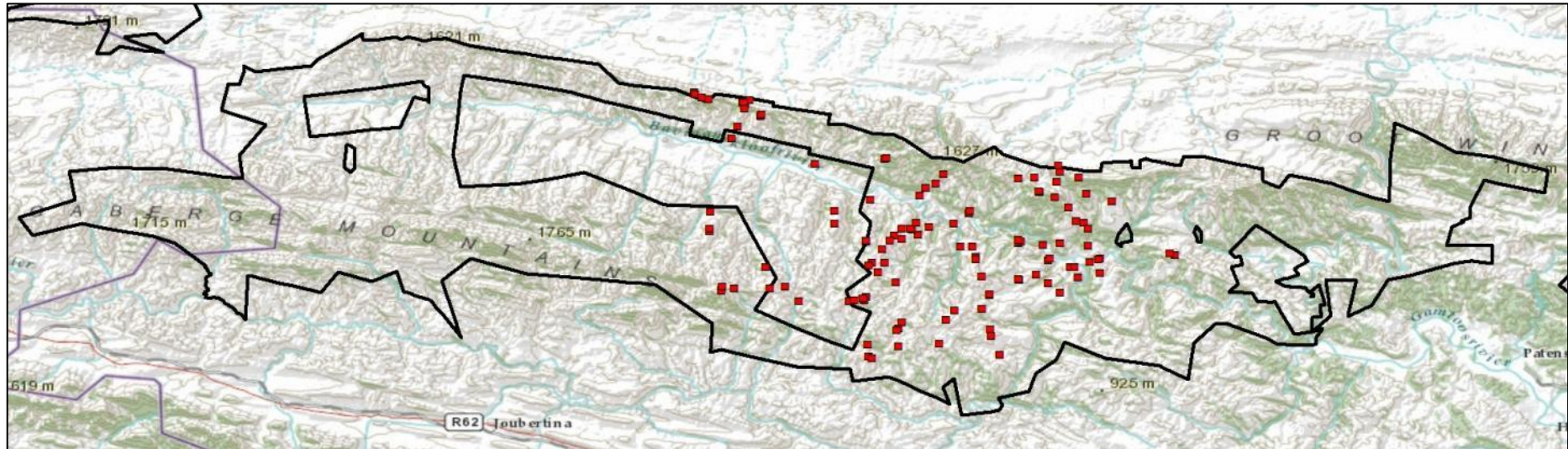


# Fire monitoring





# Vegetation monitoring





# Monitoring – the way forward

- Review monitoring framework
  - Review monitoring objectives and priorities
  - Evaluate existing monitoring efforts (internal and external) and identify critical gaps
  - Evaluate capacity to monitor
  - Based on above determine monitoring focus (also methods and frequency)
  - Link monitoring to an adaptive management framework (e.g. through the development of TPC's)



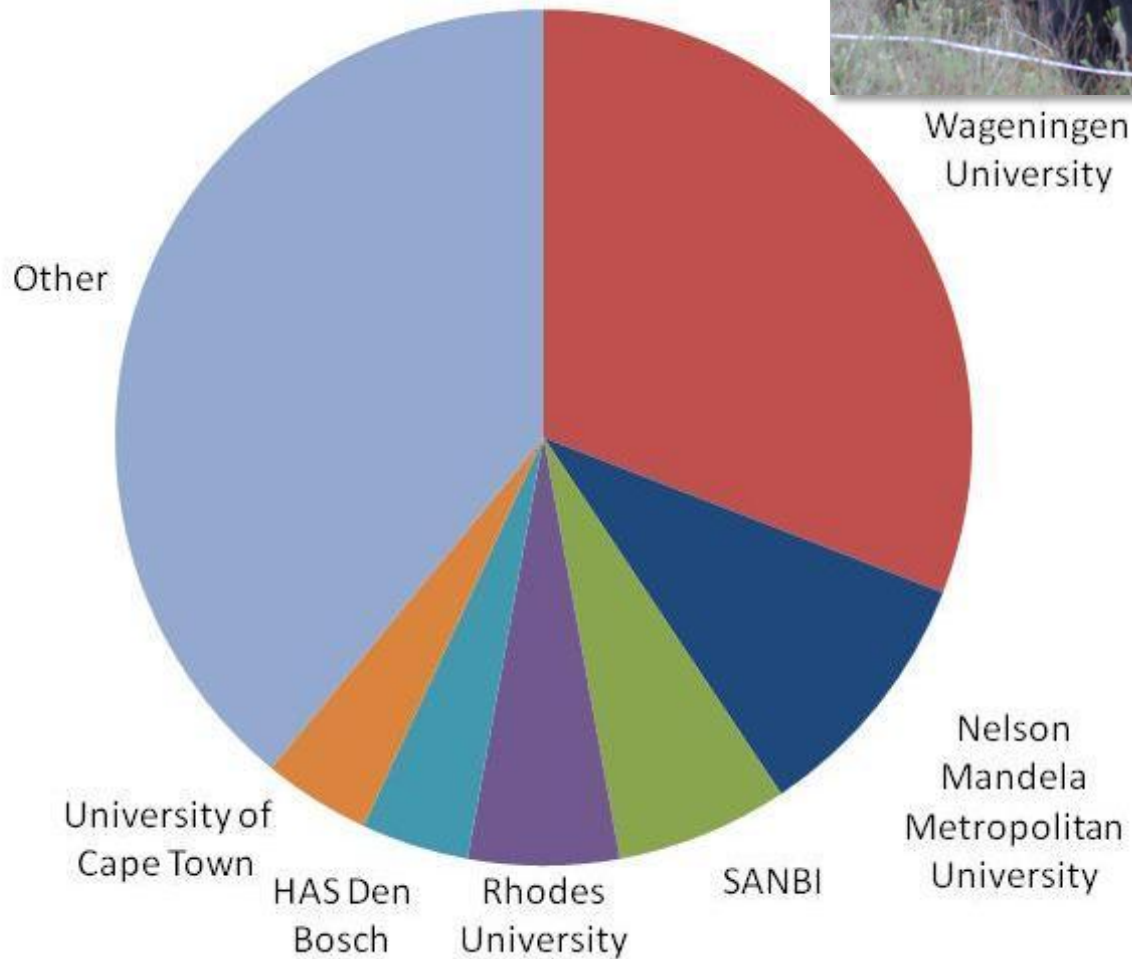


# Research





# External research





# PRESENCE

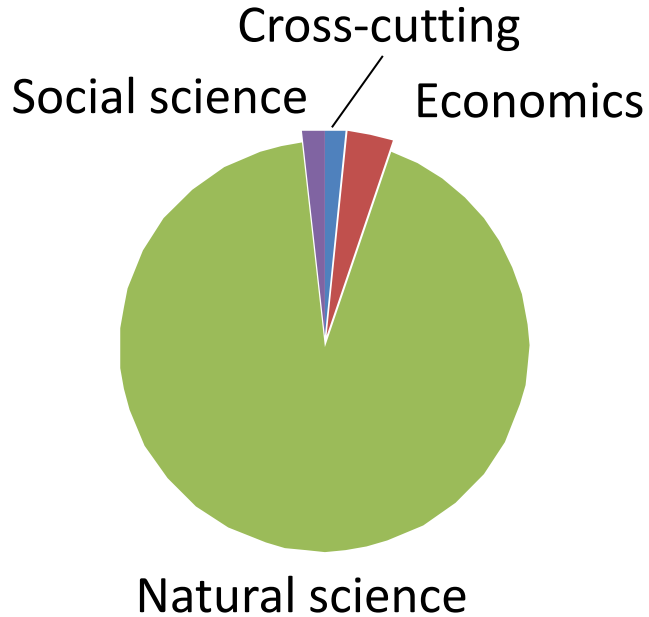
lovinglands  
COLLABORATIONS WORKING ON LIVING LANDSCAPES



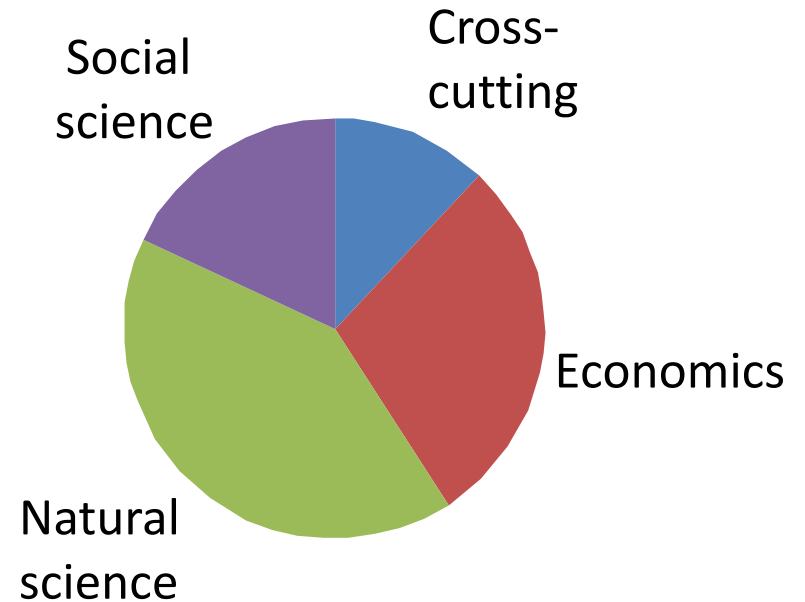


# Research by discipline

**ECPTA registered projects**  
**(Mostly On-reserve)**



**LivingLands / Presence projects**  
**(Mostly Off-Reserve)**





# Some highlights

(Sorry if your work is not mentioned  
– there's just too much happening...

...and I only have 15 min)





# Wildlife

Leopard  
habitat use

McManus

Habitat  
suitability

Van Ween

Weel





# Invasion biology

Behavioural response to invasive fish

Booth

Impacts of invasive fish

Weyl,  
Ellender





# Climate change

Impact on  
endemic  
avifauna

Lee

Impact on  
vegetation

Silander, Slingsby,  
Euston-Brown





# Thicket restoration

Spekboom  
soils

*Bekker*

Biod  
restoration  
and autogenic  
recovery

*v.d. Vyfer*

Spekboom  
survivorship

*Powell*

Impacts of  
herbivores

*Berriman*

Image: Mike Powell





# Hydrological systems and restoration

Alluvial fan  
functioning

Bobins

Becker

River channel  
incision & wetland  
restoration

Glenday

Floodplain  
form  
dynamics

Joubert

Images: PRESENCE





# Fire

Fire season and  
recruitment of  
Proteaceae

Heeleman

Fire and  
vegetation

Silander, Slingsby,  
Euston-Brown





# Payment for Ecosystem Services

Impacts of  
landuse on  
ES

Blanksma

Valuing ES

Selomane

de la Flor

Carbon  
stocks

Powell

Mills &  
Cowling

Institutionalising  
PES

Andrew





# Social studies and biodiversity stewardship

Landowner  
values, identity &  
stewardship

Potts

Tourism  
operators'  
attitudes

Montpetit

Social  
learning

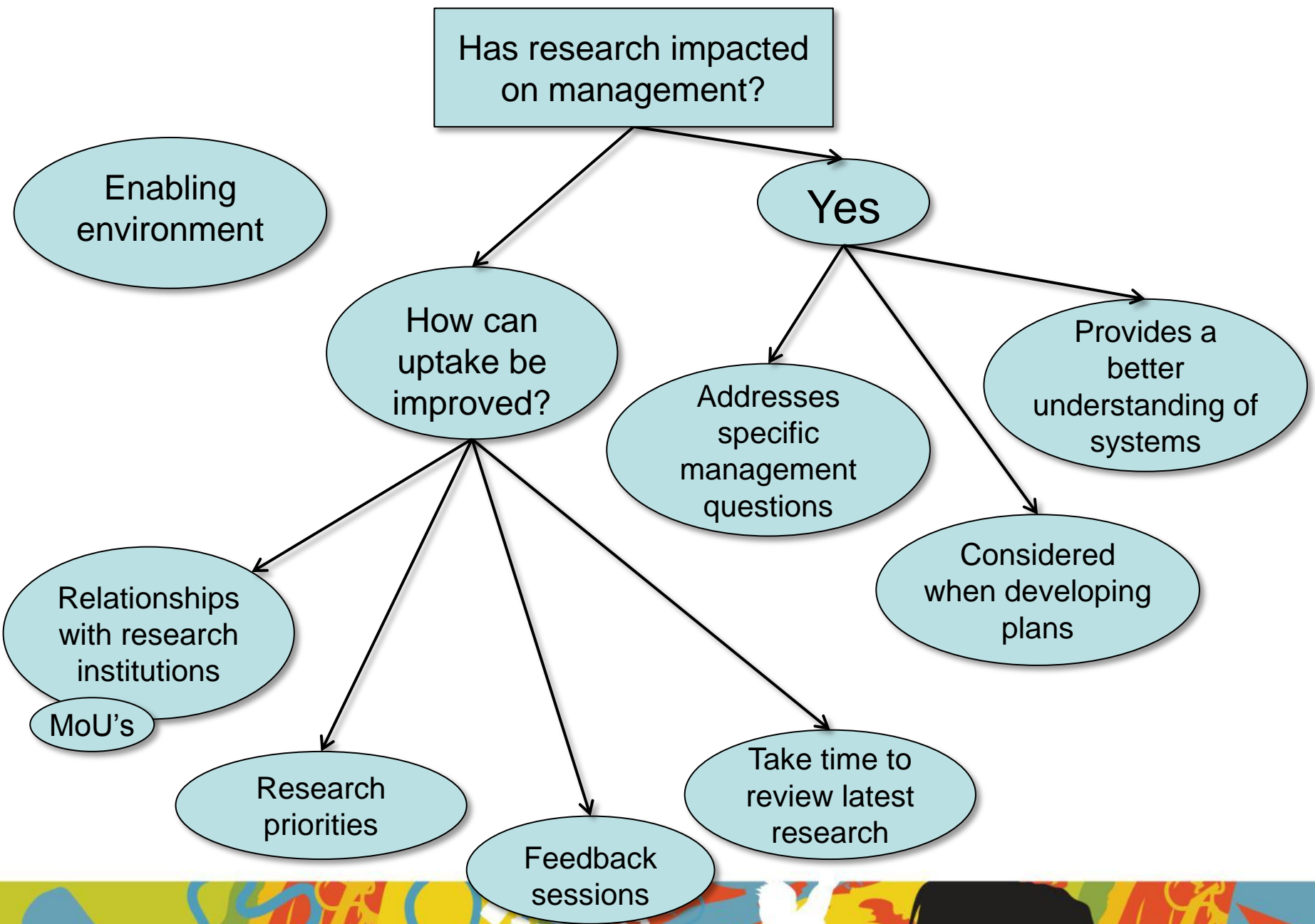
Draugelyte  
Nooij

Willingness  
to restore

Noirtin









Thanks

