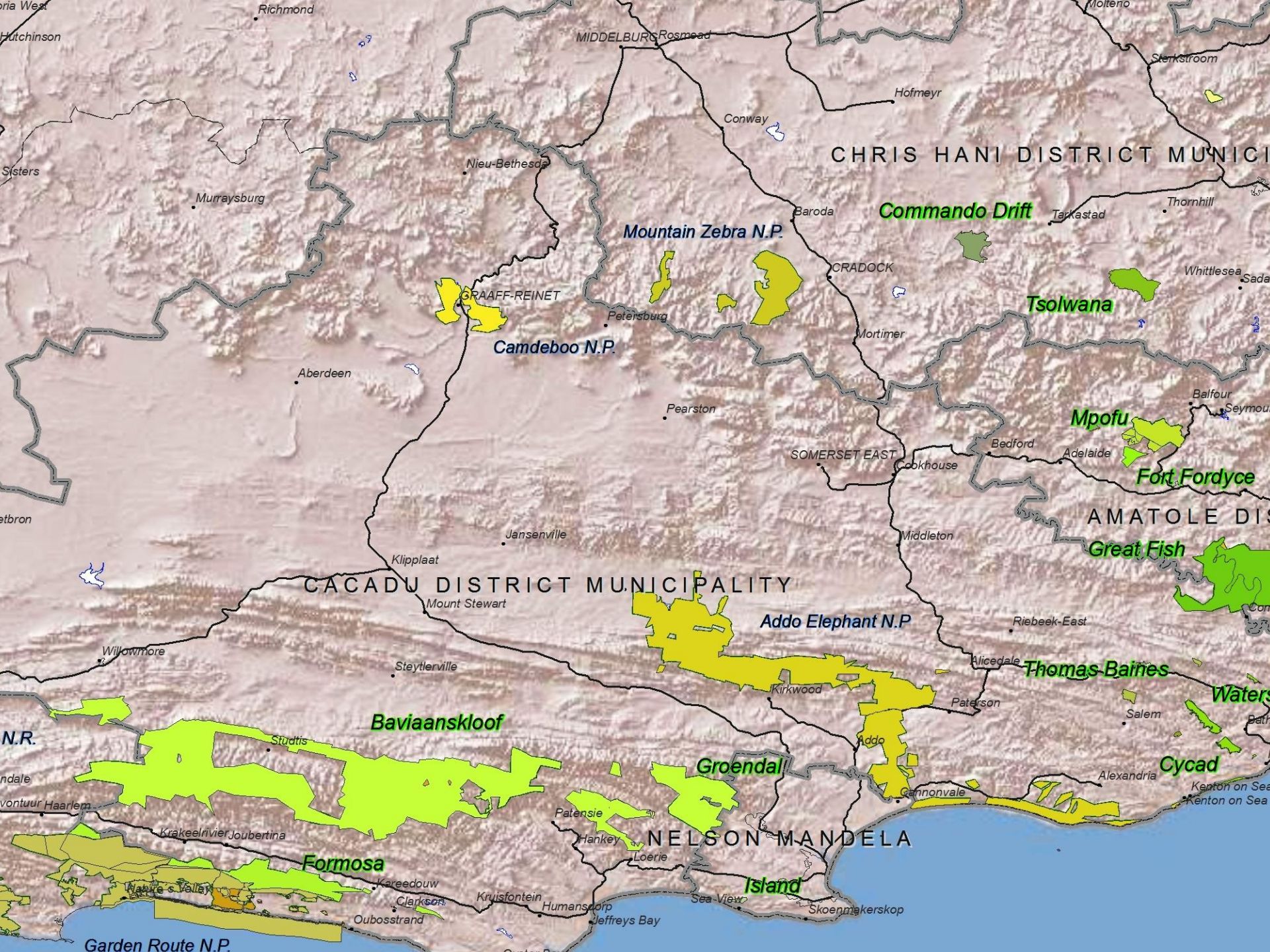


BAVIAANSKLOOF WHS

THICKET FORUM 2013

SIZWE MKHULISE



CHRIS HANI DISTRICT MUNICIPALITY

CACADU DISTRICT MUNICIPALITY

NELSON MANDELA

Mountain Zebra N.P.

Camdeboo N.P.

Addo Elephant N.P.

Commando Drift

Tsolwana

Mpofu

Fort Fordyce

Great Fish

Thomas Baines

Waters

Cycad

Groendal

Island

Formosa

Baviaanskloof

Garden Route N.P.

MIDDELBURG

CRADOCK

SOMERSET EAST

AMATOLE DIS

Murraysburg

Nieu-Bethesda

Hofmeyr

Conway

Baroda

Tarkastad

Thornhill

GRAAFF-REINET

Petersburg

Mortimer

Whittlesea

Aberdeen

Pearston

Balfour

Seymour

Bedford

Adelaide

Cobkhouse

Middleton

Riebeek-East

Jansenville

Klipplaat

Mount Stewart

Alicedale

Paterson

Salem

Alexandria

Kenton on Sea

Willomore

Steytlerville

Kirkwood

Addo

Gannonsvale

Stuëtis

Patensie

Hankey

Loerie

Sea View

Skoenmakerskop

Oubosstrand

Kruisfontein

Humanskop

Jeffreys Bay

Krakeelrivier

Joubertina

Wakke's Valley

Kareedouw

Clarkson

N.R.

ndale

vontuur Haarlem

Krakeelrivier

Joubertina

Wakke's Valley

Kareedouw

Clarkson

Oubosstrand

West

Hutchinson

Sisters

etbron

N.R.

ndale

vontuur Haarlem

Krakeelrivier

Joubertina

Wakke's Valley

Kareedouw

Clarkson

Oubosstrand

Richmond

MIDDELBURG

Rosmead

Conway

Baroda

CRADOCK

Mortimer

SOMERSET EAST

Cobkhouse

Bedford

Adelaide

Middleton

Alicedale

Paterson

Salem

Alexandria

Kenton on Sea

Kenton on Sea

Kenton on Sea

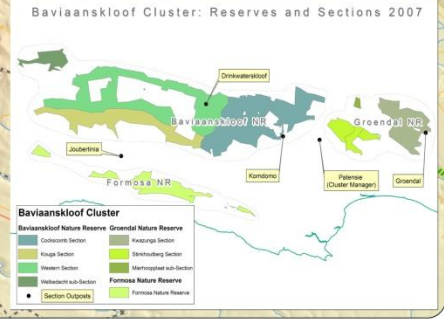
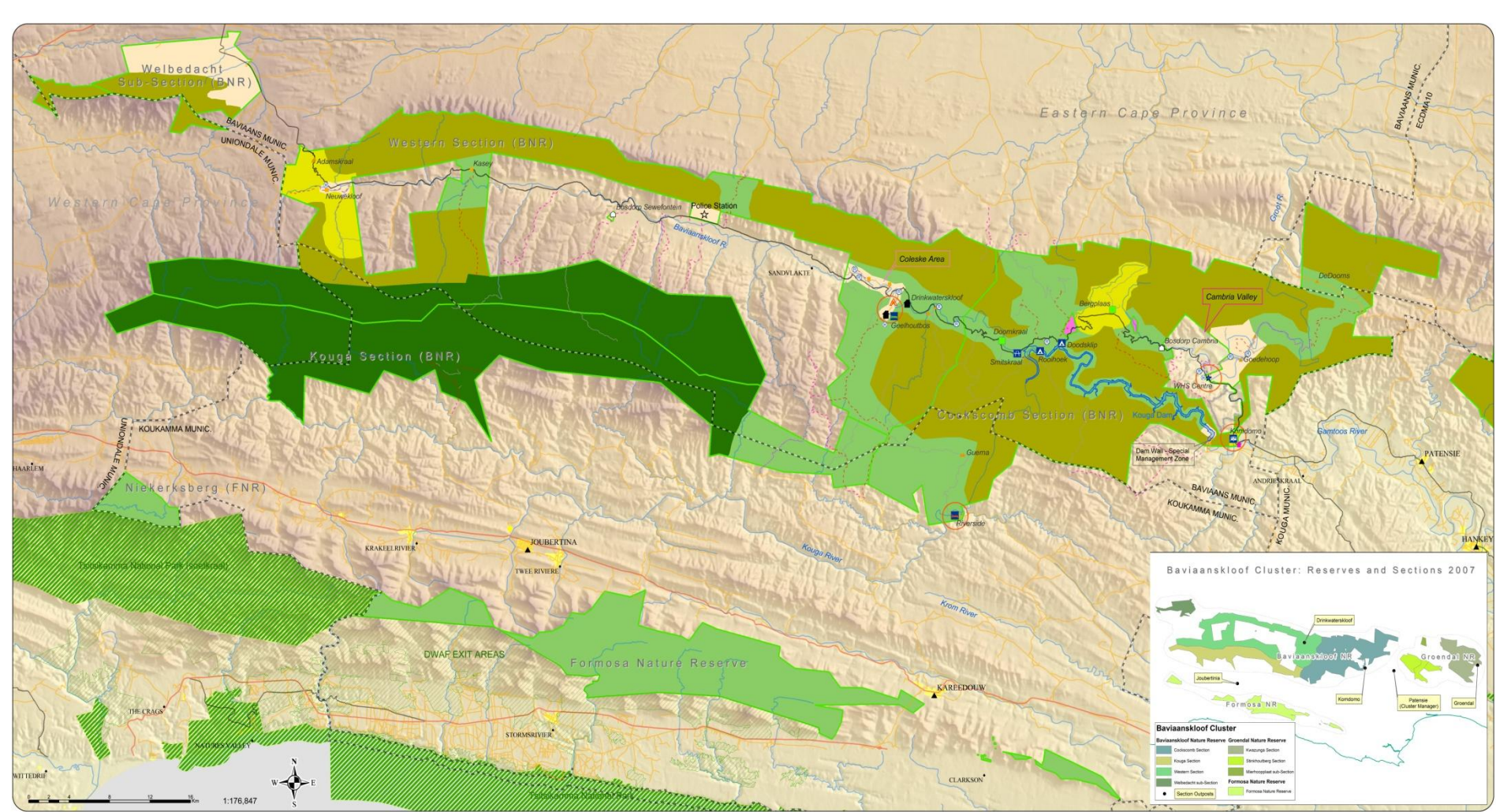
Kenton on Sea

Kenton on Sea

Kenton on Sea

BAVIAANSKLOOF WHS

- ❖ PA 243 324 ha EXTENT
- ❖ BOUNDARIES KNOWN & DAMARCATED
- ❖ STAFF COMPLEMENT- 43+36WOF+12WFW EXCL SUPPORT D
- ❖ APPLICABLE & KEY LEGISLATION KNOWN AND APPLIED.
- ❖ STRATEGIC PLAN & AOP PRIORITIES ARE ACHIEVED
- ❖ INTERNAL & EXTERNAL FUNDING
- ❖ DATABASE FOR DECISION-MAKING- BIODIVERSITY DEPARTMENT & RESEARCH, C.A.P.E. DATA (MEGA RESERVE) & STATE OF RESERVE FILE



Abers equal area projection: Central meridian 24.75 E, Std Parallel 1-32.5, Std Parallel 2-33.5, WGS 84

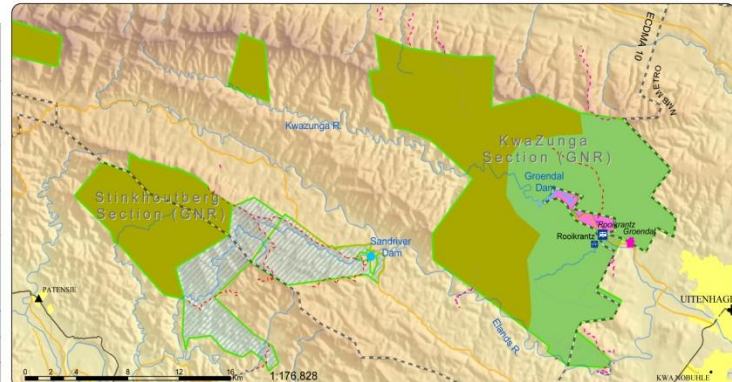
BAVIAANSKLOOF RESERVE CLUSTER CONSERVATION DEVELOPMENT FRAMEWORK; Draft 1 February 2007



Draft CDF 15 February 2007. Prepared by Andrew Skomo Baviaanskloof Mega-Reserve PMU

- | | |
|--|--|
| <p>Protected Areas</p> <ul style="list-style-type: none"> Non ECPB PA DWAF Reserves Baviaanskloof Reserve Cluster Sections <p>Roads and Tracks</p> <ul style="list-style-type: none"> Major gravel road (R032) Minor gravel road Farm Tracks - restricted Formal 4x4 routes Management Tracks - restricted Closed tracks <p>Municipalities</p> <ul style="list-style-type: none"> Municipalities <p>Urban Areas</p> <ul style="list-style-type: none"> Village Town Towns/Urban Major Rivers Dams <p>Tourism Nodes</p> <ul style="list-style-type: none"> Tourism Nodes | <p>Reserve infrastructure</p> <ul style="list-style-type: none"> Cottages & chalets Basic campsites Camp & caravan sites Picnic site Heritage centre site Closed campsite Closed chalet Managers house Managers office Staff accom. Empty houses Old houses <p>Special Management Overlays</p> <ul style="list-style-type: none"> Rehabilitation Areas Heritage Management Areas |
|--|--|

ZONE	DESCRIPTION
PRISTINE	An area retaining an intrinsically wild appearance and character, which is undeveloped and has no roads, is without permanent improvements or human habitation and provides outstanding opportunities for solitude. Currently designated or planned for designation as Wilderness in terms of Protected Areas Act within the next 5 years. Managed to protect and maintain natural and cultural resources biodiversity and the provision of environmental goods and services. Limited management interventions, applied using "lead lightly" principals. Restricted number of users, using a leave no trace ethic. Activities include hiking on no-defined routes, bird watching, research.
REMOTE	Area providing a predominantly wild character and "Wilderness" experience but does not comply with criteria for legal designation as Wilderness. Human impacts, infrastructure etc. are rare in the zone but are visible from certain vantage points. Management needs to mitigate the impacts from outside the zone. No new tourist infrastructure but existing building of cultural value could be used within guidelines set by SAHRA. Limited interaction between groups, activities could include: hiking on defined routes, kayaking, environmental education, research, bird watching. No mechanised access, and leave no trace camping only. Management vehicle access only for critical interventions.
PRIMITIVE	Similar to Remote Zone in that it is a predominantly isolated and wild area, but with greater flexibility with regard to infrastructure (basic hikers huts) and strictly controlled 4x4 vehicular access. All infrastructure designed to have minimum impact on the wilderness character of the area. Restricted user numbers and group size. Activities include 4x4 routes, horse trails, hiking trails, mountain bike trails. Management access to area regular in order to mitigate negative impact of tourist activities.
QUIET	This Zone provides an outdoor recreation environment in a natural, quiet setting, with more interaction between groups and a reduced sense of isolation. The access to the Zone is physically and logistically less demanding, and the activities are all non-mechanised. Activities include horse trails, hiking on designated trails, mountainbike trails, kloofing, adventure sports, kayaking, bird watching. Limited and sensitively designed accommodation and tourism infrastructure provided. Roads use for management purposes only.
LOW INTENSITY LEISURE	This Zone provides for a range of recreational activities (motorised and non-motorised) in a landscape that is able to handle greater numbers of visitors and groups. Interaction between groups is part of the experience. Limited sensitive basic infrastructure for accessibility and enjoyment of the area, and only limited, sympathetic development linked to recreation, tourism and management of the reserve. A range of low impact leisure activities including picnicking, walking, mountainbiking, kayaking, game viewing, hiking and adventure activities. Education centres, picnic sites, view sites, information centres, ablution facilities, parking areas and small camps, self catering accommodation only (including camping). Guided 4x4 trails and boat trips possible. May be considered for concession areas with limited access. High management presence essential.
MTO LEASE	Special Zone - Privately owned land that is completely surrounded by the nature reserve. Agreements between owner and ECPB essential in order to mitigate impacts on the Reserve and effectively manage access, fire and wildlife.
DAM WALL	Special Zone - Area around the Kouga dam wall which is managed by the Gamtoos irrigation board on behalf of DWAF. Formulation of agreements between GI and ECPB in progress to manage access and tourism activities.
MTO LEASE	Special Zone - MTO lease areas which are adjacent to the nature reserves and are managed as mountain catchments. Co-management agreements between MTO and ECPB essential for effective fire and wildlife management.



WORLD RENOWN



FOTORESEARCH

is099hi71 fotosearch.co.uk

VEGETATION TYPES & BIOMES



BUSH MAN CAVES & PAINTINGS PICS N ISAACS



BAVIAANS & BUFFALOKLOOF



CHALLENGES



- **FUNDING & INSUFFICIENT RESOURCES**
- **PRIORITIZATION MODELS: WILDERNESS/LANDSCAPE VS BIG 5**
- **FULL IMPLEMENTATION OF LANDSCAPE SCALE CONSERVATION PLANNING**
- **LACK OF SUPPORT FOR CONSERVATION EFFORTS OUTSIDE PA'S**
- **LAND CLEARING, MINING, PROSPECTING, IAP'S, MONITORING OF RESOURCE USE PERMITS, WASTE MANAGEMENT**
- **LACK OF RIPARIAN ZONE CONSERVATION**

OPPORTUNITIES



- LANDSCAPE SCALE CONSERVATION PLANNING – INSIDE & OUTSIDE PA'S
- STEWARDSHIP PROGRAM – GUIDE & SUPPORT SUSTAINABLE LAND USE PRACTISE
- 10 KM WORLD HERITAGE SITE BUFFER
- SEA PROCESS TO GUIDE TDP I.E SENSITIVITY MAPS
- MAXIMISE RECOGNITION & SUPPORT OF CONSERVATION EFFORTS BY PRIVATE LAND OWNERS
- TDP – LINKEGES TO EXTERNAL TOURISM ROUTES & INITIATIVES

FINANCIAL YEAR 2012/13



H

HIGHLIGHTS

2012/13

SECURED ANNUAL PROGRAMS & OPERATIONS



❖ PROGRESS 2012/13

- ❖ FULL IMPLEMENTATION OF AOP 2012/13
- ❖ COMPLEMENTED BY 9,5 MILLION INFRASTRUCTURE PROJECTS
- ❖ FUNDED GAME MANAGEMENT PROGRAM INCL CAPTURE
- ❖ WOF & FIRE MANAGEMENT PROGRAM
- ❖ WFW HAT PROGRAM
- ❖ TRAINING OF STAFF
- ❖ GIB'S WFW & ROAD MAINTAINANCE PROGRAM
- ❖ RESEARCH PRIORITY PLANS, & ACTIVE RESEARCH INCLUDING UNIVERSITIES RESEARCH PROJECTS
 - ❖ DUNG ANALYSIS, CPF LOCUST STUDY, VEGETATION MAPPING – FIXED TRANSECTS EUSTON BROWN, CMZ HABITAT ASSEMENT,
- ❖ PRESENCE PROGRAM & BAVIAANKLOOF RESEARCH FEEBACK WORKSHOPS ANNUALLY

FLYING HOURS & AREA COVERAGE



- ❖ **FLYING HOURS ACHIEVED 2012/13**
 - ❖ **SIGHTINGS GAP MANAGEMENT**
 - ❖ **FIRE MAPPING**
 - ❖ **BOUNDARY RISK ASSESSMENT**
 - ❖ **LAND-USE PRACTICE & ANNUAL AERIAL PHOTOGRAPHS**
 - ❖ **ALSO DONATED FLYING HOURS BY WF/INDALO**

FIREARM DRILLS & RANGER ASSESSMENTS



RANGERS SQUAD DRILL



CHALLENGES



ANTI-POACHING UNIT MEMBER GEAR



THANK YOU

